



coral[®]
entrance flooring

creating better environments

forbo
FLOORING SYSTEMS

coral[®]

The first steps in protecting your building

Everybody knows that feeling of pride and pleasure that comes with walking on a newly installed and clean floor. And the disappointment as it then becomes dirty and worn. There's a way to keep your floor and premises looking clean and presentable year in year out, as well as a way to offer your visitors and employees a safe and hygienic environment. All you need is a proper well thought through entrance floor.

Forbo Coral entrance flooring delivers superior performance in even the toughest environments. Whether facing rain, snow, sand or soil, Coral keeps the outside from getting inside. Coral entrance floors are highly functional and through their design options always form an integral part of the buildings design scheme.

Coral is *the* international market leader in textile entrance flooring for almost 50 years and now offers you more choice than ever before. Each individual range in the collection has been designed to interact with different soiling behaviour as every entrance is a unique environment on its own.



Contents

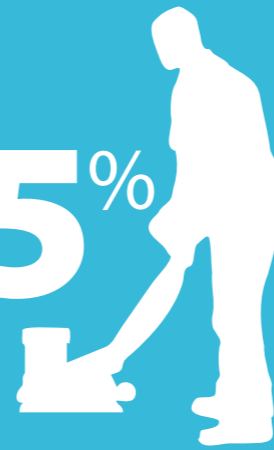
- 2 Introduction
- 4 Info bits and pieces
- 8 Coral luxe
- 10 Coral Welcome
- 12 Coral Brush
- 14 Coral Classic
- 16 Coral Duo
- 18 Coral Grip
- 20 Coral Logo
- 22 Coral tiles & Nuway
- 23 More Forbo Flooring
- 24 Cleaning & Maintenance
- 25 Committed to the Health of One
- 26 Technical table

Create a better environment with Coral entrance flooring

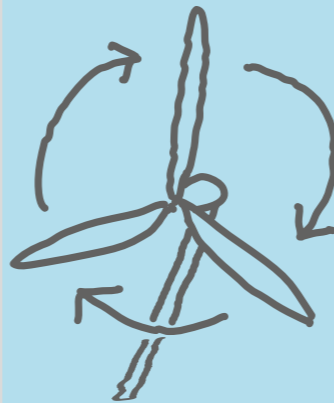
FROM HOW THEY'RE MADE TO HOW THEY PERFORM, FORBO FLOORING SYSTEMS MAKES OUTSTANDING PRODUCTS THAT ARE TRULY SUSTAINABLE. THAT'S BECAUSE OUR FLOORING PRODUCTS ARE GOOD FOR BUILDINGS, GOOD FOR PEOPLE AND GOOD FOR THE ENVIRONMENT. SO, FROM THE BUILDING THEY ARE IN TO THE WORLD OUTSIDE, WE ARE HELPING OUR CUSTOMERS TO WORK, LIVE AND RELAX IN BETTER ENVIRONMENTS.

REDUCTION
in cleaning
time

65%



Cleaning Research International has calculated and shown that the cost of maintenance is 86% of the total life cycle cost of commercial floor coverings. A well designed Coral entrance flooring system incorporating a 3-step clean-off zone is a highly effective way to cut your future maintenance costs. By stopping up to 95% of walked-in dirt and moisture from reaching your building floors, Coral can reduce cleaning time for floorcovering up to 65% and prolong the life of your floor finishes and coverings.

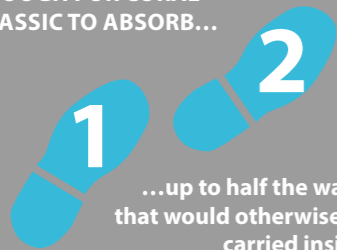


Produced with

100% green electricity
from **renewable resources**

Of all the electricity we buy, 100% comes from renewable sources. This means our Coral production site is part of an effective environmental management system and has achieved ISO 14001 certification.

TWO SIMPLE STEPS ARE ENOUGH FOR CORAL CLASSIC TO ABSORB...



...up to half the water that would otherwise be carried inside.

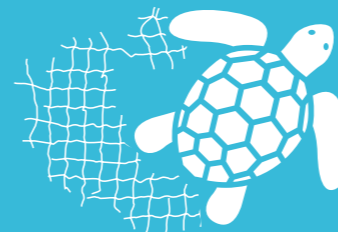
A few steps more and your feet are as dry as possible. This has clear benefits. First, the interior floor coverings stay cleaner, longer. Second, resilient floors like vinyl, linoleum, wood and concrete are less likely to become slippery and dangerous.



coral® welcome

Primary backing is made from recycled PET bottles

Many Coral products use Econyl® yarn which is made from used and abandoned fishing nets.



Using Econyl® is a way to reduce existing waste, avoid additional manufacturing-related pollution, and keep the consumption of natural resources and energy to a minimum.

95%

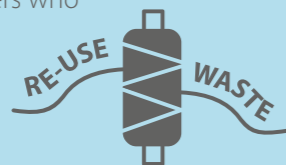
6 metres of Coral can stop up to 95% of dirt and moisture entering a building.

Cleaning Research International has proved that equipping an entrance with a six metre walking depth of Coral entrance flooring is enough to keep up to 95% of all walked in dirt and moisture out of your building. Think about your entrance in terms of preventing soiling and slippery underfoot conditions and you can:

- Cut cleaning costs significantly
- Reduce the risk of people slipping and hurting themselves as they enter or exit

Re-use waste. All the waste yarn from Coral production is re-used by the yarn supplier.

Our search for new ways to reduce our environmental impact has led us to work very closely with forward thinking suppliers who are able to incorporate ever higher levels of recycled content in their materials.



Virtually
ZERO
landfill

Virtually zero landfill is achieved by the Coral manufacturing plant.



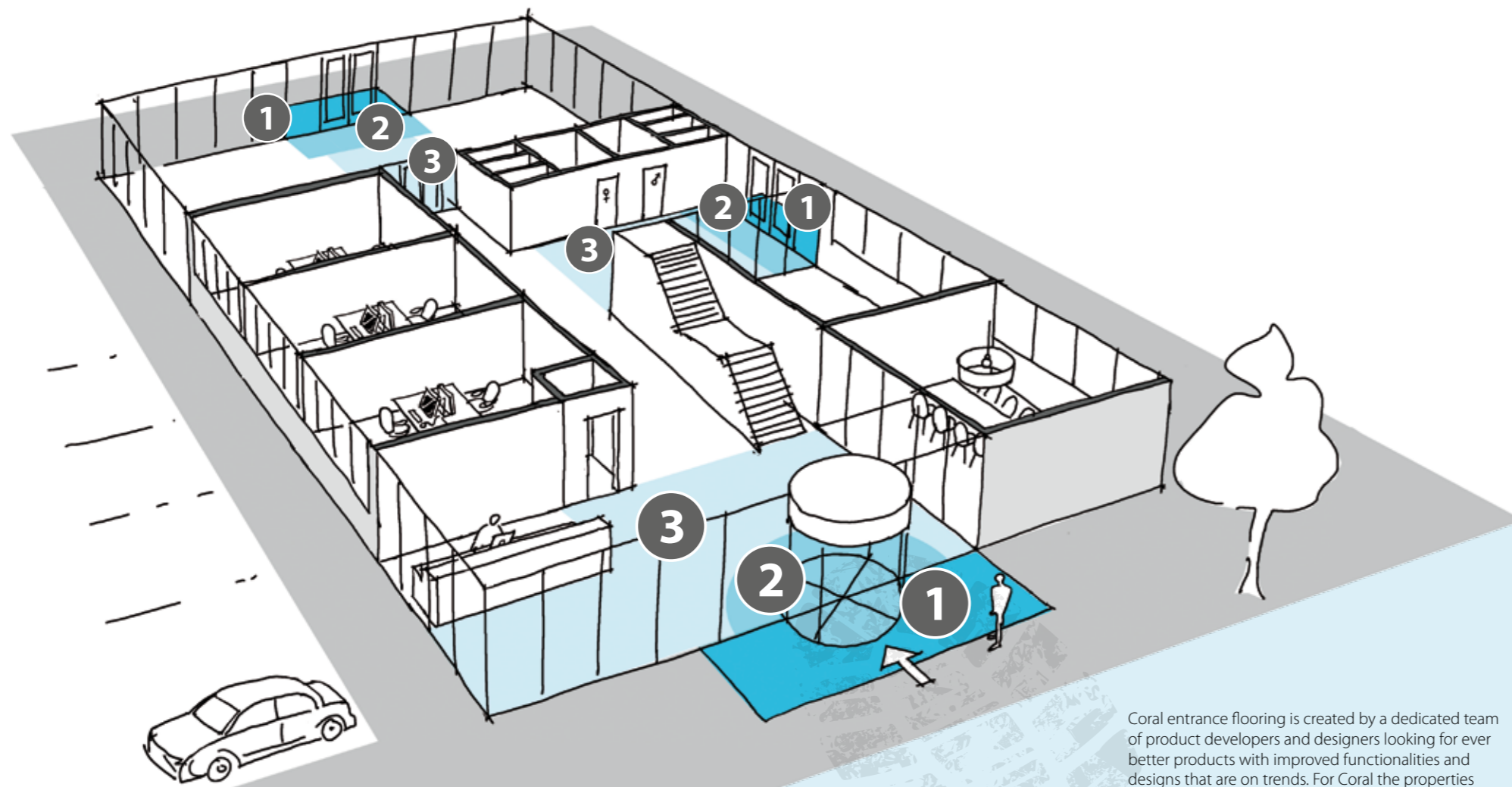
Many Coral ranges are available with an FR version for fire sensitive areas.

MODULARITY



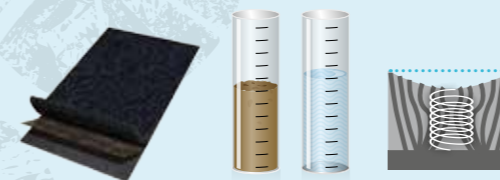
coral® classic and coral® brush are available in tile format for increased flexibility and reduced installation waste.

ENTRANCE FLOORING STARTS OUTSIDE AND BRINGS YOU INSIDE



If you really want to keep your building clean and safe, it's not enough to just put down an entrance mat in front of the door. Creating a good entrance flooring system means thinking about footfall - the number of people walking in and out in a given period - and walking routes (the directions they take once inside) and applying that information in the design of the entrance area. One of the best ways to plan an entrance flooring system is to think in terms of applications. The table opposite is designed to help you select which Coral entrance product best meets your needs.

Coral entrance flooring is created by a dedicated team of product developers and designers looking for ever better products with improved functionalities and designs that are on trends. For Coral the properties of the individual yarns as well as the way they are constructed determine the prime function of the entrance floor. Some yarns focus on moist absorption, some others are used for a scraping or brush effect. It is based on studies and developments around having the best yarn for each situation. A school entrance with children and an outside sand case, or a shop in a paved high street, require different entrance flooring solutions. The graph helps you make your choice according to your requirements.



3

entrance flooring applications

APPLICATION
1

OUTSIDE USE

Any matting placed outside the building entrance creates the first line of defense against feet-borne soil by scraping the coarsest dirt from the soles of shoes before they cross the threshold.

APPLICATION
2





INSIDE USE

Moving inside, the next line of defense, is used to remove moisture and finer dirt particles from all feet entering the building.

APPLICATION
3

OTHER CIRCULATION AREAS

Other areas in the building also suffer from soil and moisture; reception areas, corridors, walkways to other parts of the building, elevators, staircase exits, etc. All these areas are prone to residual soiling and will benefit highly from a purposely designed Coral entrance floor to absorb this soiling.

	Application				
coral[®]grip MD	1 + 2	●○○○	●●●●	●○○○	X
coral[®]grip HD	1 + 2	●○○○	●●●●	●○○○	X
coral[®]duo	2	●●●●	●●●●	●●○○	X
coral[®]brush	2 + 3	●●●●	●●●○	●●○○	X
coral[®]welcome	2 + 3	●●●●	●●●○	●●●●	X
coral[®]classic	2 + 3	●●●●	●●○○	●●○○	X
coral[®]luxe	2 + 3	●●●●	●●○○	●○○○	-
coral[®]logo	2 + 3	●●●○	●●○○	●○○○	X

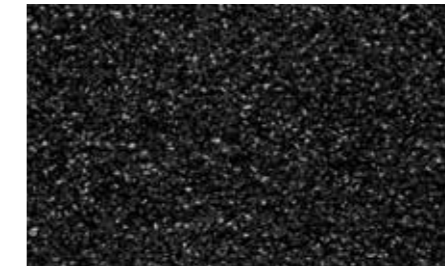
Where aesthetic appeal is a top priority

With its luxurious appearance and rich pile height Coral Luxe may not immediately give the impression of a traditional entrance floor, but it is in fact a highly efficient clean-off solution for light to medium traffic areas where aesthetic appeal is a top priority. Coral Luxe is particularly designed to enhance the aesthetic appeal of entrance lobbies, corridors and reception areas. Because of its luxurious look and feel, this deceptive soil and moisture barrier blends particularly well with other carpeted areas of the building. Coral Luxe absorbs moisture from the soles of shoes and conceals dirt within the pile. The yarns used in Coral Luxe are designed for longevity and appearance retention.



- Rich and elegant appearance
- Comfortable and soft feel
- Offers effective moisture and soil absorption
- Dries quickly for maximum functionality
- Complies with the highest fire class standard: Bfl-s1
- Suitable for light industrial use and private applications
- Ideal for circulation areas
- Produced with phthalate free technology

Some yarns focus on moist absorption, some others are used for a scraping or brush effect.



2901 | diamond



2902 | citrine



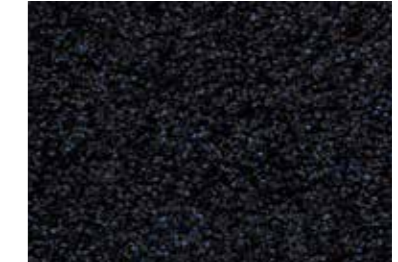
2905 | topaz



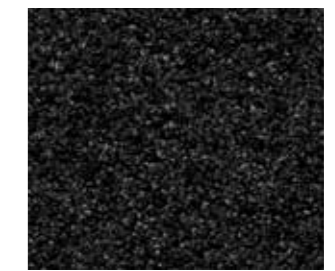
2906 | garnet



2901 | diamond



2907 | sapphire



2910 | onyx

The 6 colours of the Coral Luxe collection all have black as the base colour, mixed with fashionable highlights.

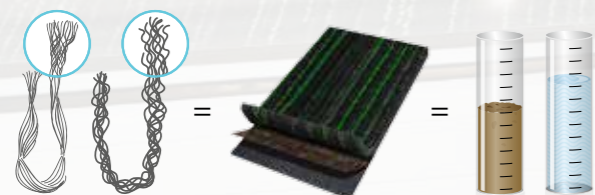
Where design meets environment

With its contemporary linear design and rich, deep pile, Coral Welcome packs the style and aesthetic appeal of a luxury carpet. It makes an unequivocal statement in any entrance area. But Coral Welcome is more than just a fabulous looking floor covering – it's an environmentally advanced one as well. The secret lies in its use of Econyl[®] 100% regenerated yarn, which is made from regenerated industrial and postconsumer waste. In the creation of Econyl[®] products our supplier is waste positive, which means the amount of waste removed from the earth is greater than the amount of waste resulting from production. On top of that, the production has a low environmental impact because we limit the consumption of natural resources and energy to a minimum. Taking the environmental aspect even further, the primary backing of Coral Welcome is made from recycled PET bottles.



- Made with Econyl[®] 100% regenerated yarns
- Primary backing made from recycled PET bottles
- Produced with phthalate free technology
- The only entrance flooring in the world with an environmental BRE A+ rating
- Keeps out moisture and dirt
- Complies with the highest fire class standard: Bfl-s1
- Suitable for the toughest commercial use
- Ideal for inside entrance and circulation areas

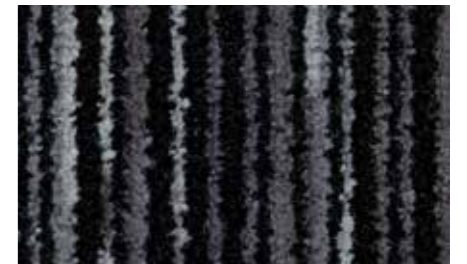
Some yarns focus on moist absorption, some others are used for a scraping or brush effect.



3207 | blue velvet



3210 | black magic



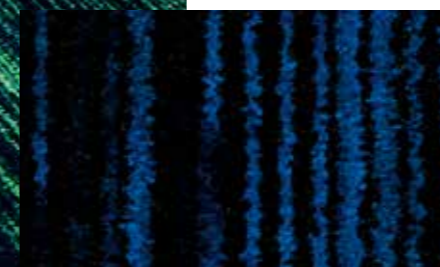
3201 | silver shadow



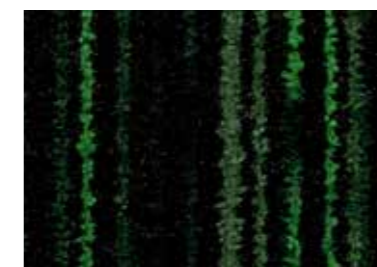
3206 | volcano



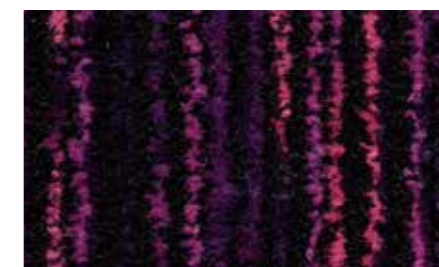
3202 | desperado



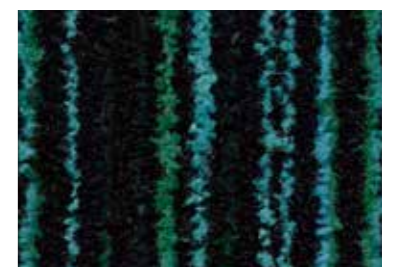
3207 | blue velvet



3208 | matrix



3219 | colour purple



3205 | blue lagoon

Forbo works closely with suppliers who share our determination and ambition to make ever-greater use of regenerated and recycled materials.

3208 | matrix

A strong and solid performer that fits in anywhere

Coral Brush is suitable for all types of entrance areas, absorbing moisture and removing dry soiling as the weather demands. Created around simple, solid colours, this collection works well with any interior design, serving as eye-catcher or self-effacing support for the rest of the floor design. Coral Brush is made of three yarns: capillary yarns to absorb moisture, active dirt-scraping yarns and heavy duty texture yarns that can withstand the heaviest pounding. The space between the yarns serves to hide dirt, which ensures a clean appearance for longer.

The Coral Brush range is also available in tile format for increased flexibility. See page 22 for more information.

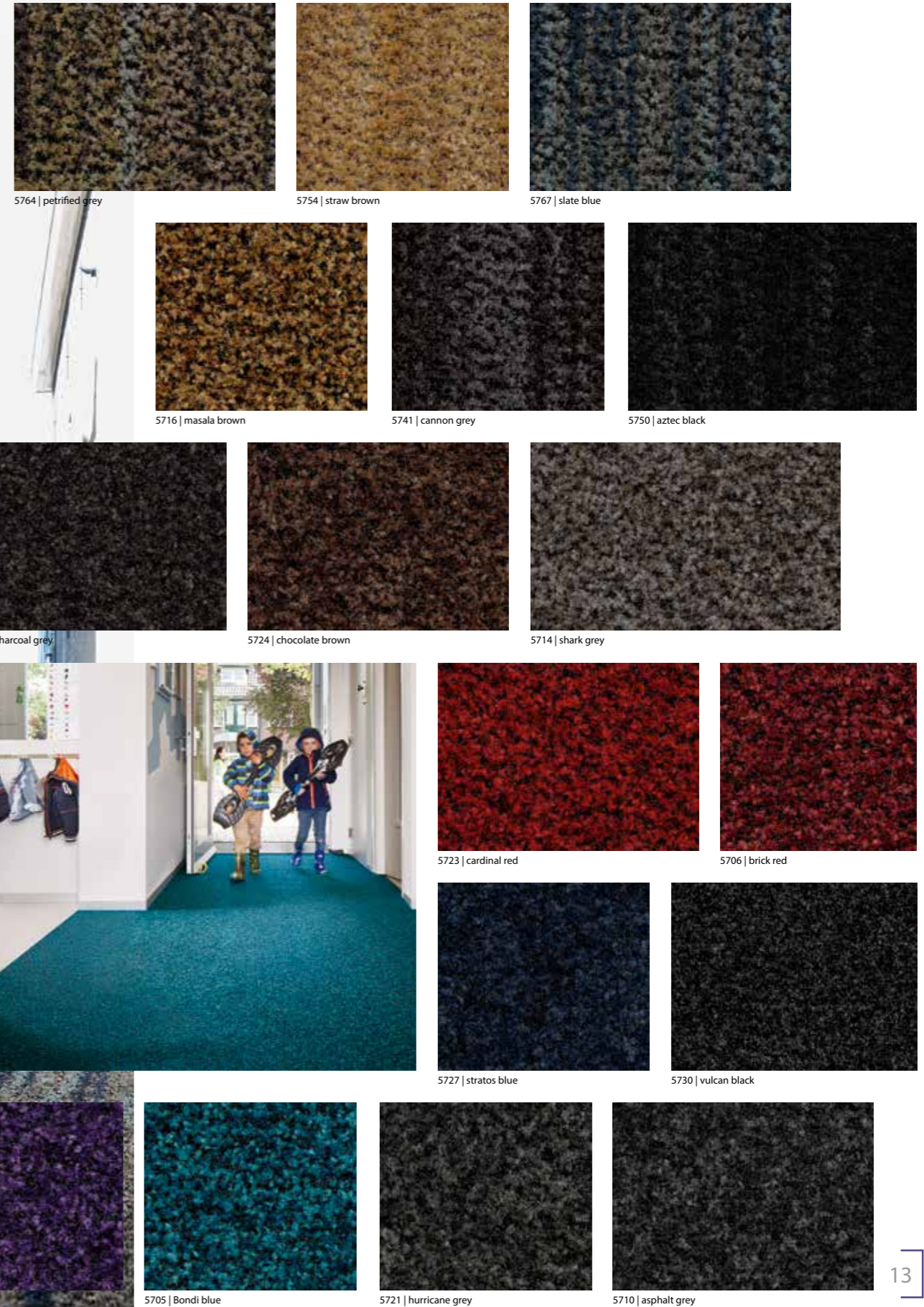


- Good all-rounder that keeps out moisture and dirt
- Made with Econyl[®] 100%-regenerated yarns
- Appealing colours complement every floor
- Complies with the highest fire class standard: Bfl-s1
- Suitable for the toughest commercial use
- Ideal for inside entrance and circulation areas
- Produced with phthalate free technology

Some yarns focus on moist absorption, some others are used for a scraping or brush effect.



Coral Brush offers a choice of 18 colourways that can be used with each other or in combination with other Coral ranges.



The ultimate moisture absorber

Research shows that taking just two steps on Coral Classic's moisture absorbing yarns is enough to absorb half of the foot-borne moisture that would otherwise be carried inside on the soles of people's shoes. A few steps more and your feet are as dry as possible. This has clear benefits. First, the floor coverings further inside stay cleaner, longer. Second, resilient floors like vinyl, linoleum, wood and concrete are less likely to become slippery and dangerous. Independent tests have shown that Coral Classic will maintain its performance – and appearance – for years to come thanks to the use of solid-colour yarns that guarantee its appearance throughout its lifespan.

The Coral Classic range is also available in tile format for increased flexibility. See page 22 for more information.



- Maximum moisture absorption and scrapes off dirt
- Choice of attractive contemporary colours
- Maximum colour fastness
- Complies with the highest fire class standard: Bfl-s1
- Suitable for the heaviest commercial and light industrial use
- Ideal for inside entrance and circulation areas
- Produced with phthalate free technology

Some yarns focus on moist absorption, some others are used for a scraping or brush effect.

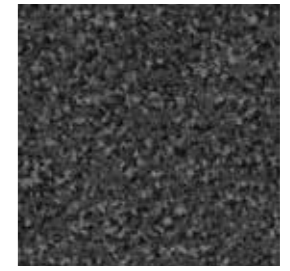


4730 | raven black

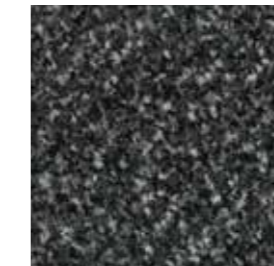
Coral Classic will maintain its functionality and appearance for years to come thanks to the use of solid-colour yarns.



4730 | raven black



4721 | mouse grey



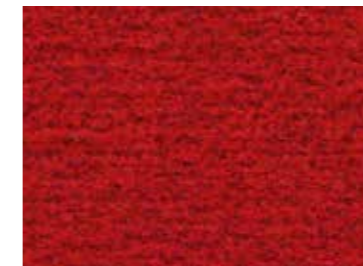
4701 | anthracite



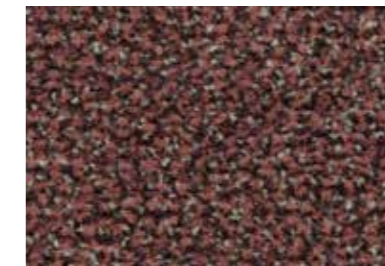
4751 | silver grey



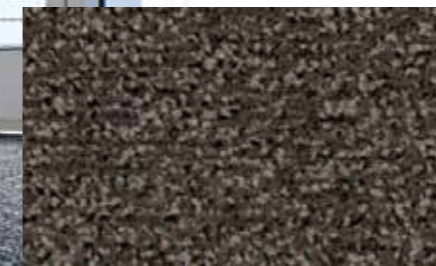
4727 | navy blue



4753 | bright red



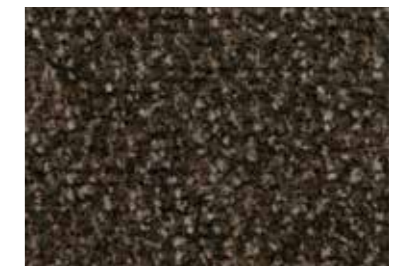
4759 | old rose



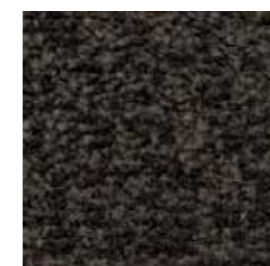
4764 | taupe



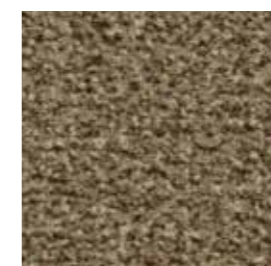
4750 | warm black



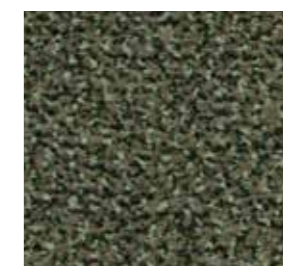
4744 | espresso



4756 | bronzetone



4774 | khaki



4758 | olive



4701 | anthracite

The best protection against dirt and moist for every space

A short entrance zone and still keeping your floorcovering clean don't go together, do they? Well, yes, they can. Coral Duo is the go-to solution when you need maximum dirt removal, unrivalled dirt retention and exceptional moisture absorption all in the short distance of just a couple of paces. Research has shown that Coral Duo retains 10% more dirt in the first few metres than any other textile entrance flooring solution on the market. Which makes it the best choice for smaller entrances. Featuring a ribbed construction, Coral Duo is not only functional, it also provides an aesthetically pleasing aspect to any entrance area and is easy to combine with our Coral Brush and Classic collections in larger entrance spaces.

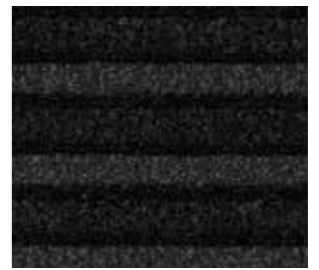


- Excellent solution for every entrance
- Made for 75% with Econyl[®] 100% regenerated yarns
- Produced with phthalate free technology
- Unbeatable performance on both moisture and dirt
- Complies with the highest fire class standard: Bfl-s1
- Suitable for the toughest commercial use
- Ideal for inside entrances with limited entrance floor space

Some yarns focus on moist absorption, some others are used for a scraping or brush effect.



9723 | African red



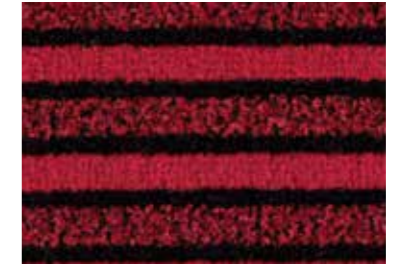
9730 | black diamond



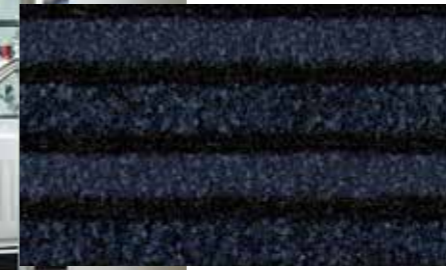
9721 | dark steel



9710 | luna pearl



9723 | African red



9727 | Volga blue



9725 | cafe bahia



9724 | cafe supreme



9714 | Sicilian sand

Coral Duo is reinforced with alternating strips of strong, thick yarns with additional dirt-scraping properties.

9727 | Volga blue

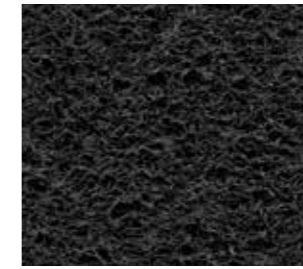
The robust and ultimate dirt and grit remover

Want to know the secret to keeping your interior clean even when it looks like a hopeless cause? Don't start your entrance floor protection inside, start outside – by scraping off the largest soil particles before your visitors even cross the threshold. Coral Grip is a versatile, non-woven clean off barrier mat for outdoor and indoor use that comes in medium-duty (MD) and heavy-duty (HD) formats. Standard Coral Grip has an open, non-backed, pervious structure, though it can also be manufactured with an Everfort vinyl backing to make it impervious. And when the going is really tough, there's Coral Grip HD, whose patented embossed design and durable, pliable vinyl filaments ensure a highly effective dirt-scraping action.

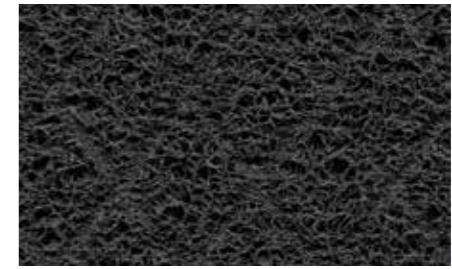


- Contains granulates for maximum non-slip performance
- Cleans off the worst dirt before it can get inside
- Helps protect an inviting interior design street-side
- Suitable for the heaviest commercial use
- Ideal for outside and inside entrance

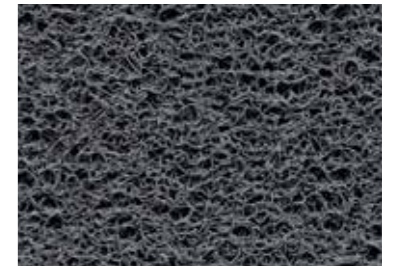
Some yarns focus on moist absorption, some others are used for a scraping or brush effect.



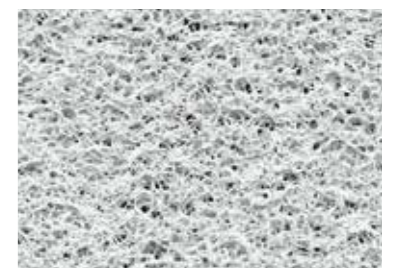
6950 | ink (MD)
6150 | ink (HD)



6945 | lead (MD)
6145 | lead (HD)



6941 | ash (MD)
6141 | ash (HD)



6942 | salt (MD)
6142 | salt (HD)



6943 | wine (MD)
6143 | wine (HD)

6145 | lead

6143 | wine

The addition of granulated PVC chips to the filaments creates a non-slip surface that will help prevent people from slipping and sliding.

Great looks for a great welcome

Forbo has the capability to offer a bespoke print or cut-out design service that can be tailored to your precise design specification, offering individuality and a unique point of difference. Our Coral Logo collection offers a wide range of bright attractive colours. Depending on the colours and design of your corporate identity, you can choose between a printed mat or one with a cut inset logo. The Coral Logo collection is designed to the same standards as all other Coral products, which means it will retain its looks whilst keeping out dirt and moist for years to come.



Printed logo mat

- Excellent visual quality and bright, attractive colours
- Perfect for complicated designs featuring multiple colours
- Choose from any of the colours shown plus Pantone and RAL colour matching
- Stays flat on the floor, causing less trips, due to heavy vinyl backing
- Long lasting and high resistance to sun light
- Excellent performance in removing dirt from your shoes
- Produced with phthalate free technology

Cut inset logo mat

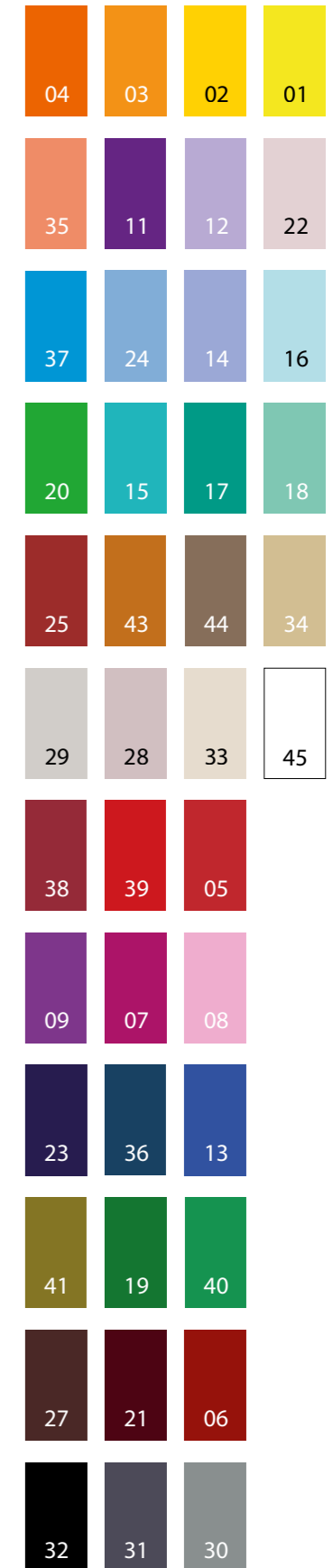
- Ideal for extreme traffic conditions and maximum functional performance
- Choose from any colour from the standard Forbo Coral collection for the base background and logo colours
- Excellent performance due to use of Coral quality products
- Easy to combine as inlay in larger Coral installations
- Produced with phthalate free technology



Create a compelling first impression and reinforce your corporate identity

coral[®] logo Technical specifications

Coral Logo (43xx)*			
	ISO 1765	Approx. 8 mm	
	EN 1307	31, commercial light	
	Available sizes (all sizes are approx.) Roll sizes with 2.5 cm edge each side	Standard mat sizes (sizes with edges)	
		Special sizes (sizes without edges)	
	Mat sizes with 2.5 cm edge all sides	55 x 90 cm	any width, any length
		105 x 155 cm 105 x 300 cm 155 x 197 cm 155 x 300 cm 197 x 197 cm 197 x 300 cm	up to 192 cm wide
Colour fastness ratings:			
	EN ISO 105/B02	> 5	
	EN ISO 105/X12	4-5	
	EN ISO 105/E01	4-5	
Manufacturing method/type		Tufted, 1/8" cut-pile	
Designs		Hi-definition custom print	
Pile material		100% High Twist Nylon polyamide	
Tuft base		Non-woven polyester	
Backing phthalate free vinyl		EVERFORT vinyl	
	ISO 8543	Approx. 3350 gram/m ²	
	ISO 8543	Approx. 680 gram/m ²	
	ISO 1766	Approx. 5 mm	
	ISO 8543	0.113 gram/cm ³	
	ISO 1763	Approx. 110.000/m ²	
	EN 1307	LC2	
Other remarks		Dirt absorption capacity: 600 g/m ² Moisture absorption capacity: 3-4 l/m ² Production tolerance of 5% on size and colour	
All Coral products meet the requirements of EN 14041, excluding loose-laid mats and rugs		CE EN 14041	
	EN 13501-1	B _n -s1	
	EN 13893	DS	
		< 2 kV	



coral[®] tiles

Coral tiles combine all the moisture absorbing properties of Coral Classic and Coral Brush but with the flexibility that comes with 50 x 50 cm tile formats. Using Coral tiles can reduce cut off waste and also allows for quicker installation. This is particularly relevant when downtime or if a retail store opening times are at stake. In addition the increased flexibility of fitting a modular format also allows easier storage and handling.

Coral tiles are available in all colours from the Coral Classic and Brush collection. The colours of both collections can be mixed for a very functional, though very attractive entrance at the same time. Coral tiles offer the same product features as the Coral Classic and Brush sheet range. The tiles can be laid broadloom or tessellated.



Coral tiles are packed per 12 tiles in a box (3 m²). A full 110 x 110 cm pallet contains 28 boxes (74 m²). Coral tiles have a phthalate free PVC backing.

Coral Classic tile

Total thickness: approx. 9 mm
Total weight: approx. 4700 gram/m²
Size: 50 x 50 cm

Coral Brush tile

Total thickness: approx. 9 mm
Total weight: approx. 4700 gram/m²
Size: 50 x 50 cm

nuway[®]

Forbo Flooring Systems also manufactures Nuway engineered rigid entrance flooring systems. The Nuway collection offers a wide range of both single and double sided rigid made-to-size entrance floors which provide a hard wearing, outstanding first line of defense against soil and moisture for both feet as well as heavy wheeled traffic for ships and other commercial heavy use applications.

With offering Coral textile inserts, Nuway allows the rigid mat element of the entrance flooring system to be colour matched with the textile clean off area, providing an effective, integrated entrance system solution. For more detailed information on our Nuway entrance systems, please visit www.forbo-flooring.com/nuway



Forbo's Nuway collection offers value for money alternatives in entrance systems where the level of traffic is very heavy and where aesthetics are key.



safety vinyl



carpet tiles



static control flooring



project vinyl



Luxury Vinyl Tiles



linoleum

More Forbo Flooring

Why deal with multiple suppliers when you can deal with one? Forbo Flooring Systems is a global producer of commercial flooring solutions. Our flooring solutions offer includes:

- Environmentally friendly, functional and design-oriented linoleum
- An extensive range of sheet project vinyl, acoustic vinyl and safety vinyl.
- High performing static control flooring for areas with sensitive electronic equipment.
- High quality European manufactured Luxury Vinyl Tiles.
- Carpet tiles for both public and commercial environments.
- Flocked sheet and tiles for areas that need the benefits of both textile and resilient floor coverings.
- Cushioned vinyl for the home environment in a wide range of designs.
- Entrance flooring systems that keep interior floors clean, dry and safe.

Please visit our website www.forbo-flooring.com to see our extensive range of flooring products.



cushion vinyl



flocked flooring

Our Coral entrance systems: Remove, Retain, Release and Recover



Remove soiling

Our Coral ranges remove up to 95% of dirt within the first 6 steps of the entrance zone.

Retain soiling

Coral products are constructed with unique yarns that have the ability to hold water and dirt within the entrance floor. However, entrance products are just like waste bins and when they get full of dirt, just like any other waste bin, the rubbish overflows and soil is tracked into nearby flooring, so it's important that Coral is regularly vacuumed and cleaned.

Release soiling

Unlike many textile entrance products, Coral is a cut pile product allowing the dirt to be easily released on vacuuming.



Cut pile construction

Loop pile construction

Recover 'as new' after cleaning

Coral has been designed specifically to withstand the intense cleaning regimes that are needed in a high traffic entrance area.

Cleaning and maintenance

Regular cleaning

It is essential that dry soiling is removed from the entrance floor space on a regular basis. The most effective method is to use an upright vacuum cleaner or a suction only machine with a powered rotating head attachment. Vacuum slowly in all directions to obtain the maximum benefit.

Periodical cleaning

Spot cleaning: use an absorbent pad or blunt scraper to remove as much of the spillage as possible. Treat the residue with a proprietary spot cleaner for nylon. Rinse with clean water. Remove water with an absorbent pad or machine and allow to dry.

Additional cleaning may be required to minimise the appearance of traffic lanes in high-traffic areas. Two methods can be used. The first is dry extraction. This involves applying a natural or synthetic compound that is impregnated with water, detergent and safe-to-use solvents. The second is cylindrical brush extraction. Here a machine with counter-rotating brushes is used to both deliver the cleaning solution and collect the resulting dirty liquid.

Finally, loose-lay mats can be removed and cleaned off site at regular intervals.

Scheduled maintenance

As well as regular and daily cleaning, Coral should be periodically cleaned using the more aggressive spray-extraction technique. This involves removing the dirt that has collected at the base of the fibres, reconditioning the pile and so restoring the cleaning performance. How often you should do this depends on various factors including type of traffic, amount of traffic and the effectiveness of the regular and daily cleaning regimes. Spray extraction involves using a spray or hot water extraction machine or a 3-in-1 extractor.

Committed to the Health of One

As people on average spend 80 to 90% of their time indoors it is important to consider the quality and the health aspects of the indoor environment. In moving in and out of buildings like residential homes, the office, school, hospitals, cinema's, shops, etc. we tend to bring the outdoor environment inside, in such a way that is not always desired. At Forbo Flooring Systems we aim at creating safe, hygienic and pleasant environments that benefit the health and feeling of wellbeing of the individual. Our Coral entrance flooring systems make that contribution by taking care that buildings are safe and hygienic and remain so in all weather conditions. As Coral entrance floors are low emitting and produced with phthalate free technology, they are a safe choice offering you protection and the benefit of keeping the indoors clean, free of dirt and dust, moist and allergen triggers.



Fire standard compliance











All phthalate free vinyl-backed Coral products comply with fire class B_{fl}-s1. This is vital, because every entrance and exit is a fire exit too. If compliance with even tougher fire regulations is required, we can supply our textile-based products with a special latex backing. This backing should also be used when placing Coral on stairs.



Many Coral ranges are available with an FR version for fire sensitive areas.




Coral technical specifications

		Coral Luxe (29xx)	Coral Welcome (32xx)*	Coral Brush (57xx)*	Coral Classic (47xx)*	Coral Duo (97xx)*	Coral Grip HD (61xx)	Coral Grip MD (69xx)							
 Total thickness	ISO 1765	Approx. 8.5 mm	Approx. 9 mm	Approx. 9 mm	Approx. 9 mm	Approx. 9 mm	With backing approx. 17 mm Open structure approx. 16 mm	With backing approx. 12 mm Open structure approx. 11 mm							
 Total thickness Coral tiles	ISO 1765	-	-	Approx. 9 mm	Approx. 9 mm	-	-	-							
 Wear classification	EN 1307	31, commercial light	33, commercial heavy	33, commercial heavy	33, commercial heavy	33, commercial heavy	33, commercial heavy	33, commercial heavy							
Colours		6	8	18	13	8	5	5							
 Available sizes (all sizes are approx.) Roll sizes with 2.5 cm edge each side		Rolls	Mats	Rolls	Mats	Rolls	Mats	Rolls	Mats						
		105 cm	105 x 155 cm	205 cm	105 x 155 cm	105 cm	55 x 90 cm	105 cm	55 x 90 cm	205 cm	No mats	open 122 cm, with backing 127 cm	60 x 90 cm	open 122 cm, with backing 127 cm	60 x 90 cm
		205 cm	135 x 205 cm			155 cm	90 x 155 cm	155 cm	90 x 155 cm				Mats only with open structure		Mats only with open structure
 Mat sizes with 2.5 cm edge all sides		Roll lengths approx. 20 m		Roll lengths approx. 27.5 m		Roll lengths approx. 27.5 m	205 cm	135 x 205 cm	205 cm	135 x 205 cm	Roll lengths approx. 27.5 m		Roll lengths approx. 10 m		Roll lengths approx. 15 m
Available in tiles		No	No	yes - size: 50 x 50 cm (12 tiles in a box = 3 m ²)	yes - size: 50 x 50 cm (12 tiles in a box = 3 m ²)	No	No	No							
Colour fastness ratings:															
 Light	EN ISO 105/B02	8	7	>5	7-8	>5	7	7-8							
Rubbing	EN ISO 105/X12	4-5	5	5	4-5	4-5	4-5	4-5							
Water	EN ISO 105/E01	4-5	4-5	4-5	4-5	4-5	5	5							
Seawater	EN ISO 105/E02	4-5	4-5	4-5	4-5	5	5	5							
Waterstains	EN 1307 annex G	5	5	5	4-5	5	5	5							
Shampoo	BS 1006	4	4-5	4-5	4-5	4-5	5	5							
Organic solvents	EN ISO 105/X05		4-5	4-5	4-5	4-5	4-5	4-5							
Manufacturing method/type		Tufted, 5/32" cut-pile	Tufted, 5/32" cut-pile	Tufted, 5/32" cut-pile	Tufted, 5/32" cut-pile	Tufted, 5/32" cut-pile	Non Woven scraping mat with embossing	Non Woven scraping mat							
Designs		Plain colored	Multi-coloured linear	Plain designed/ coloured blend	Multi coloured designed/coloured	ribbed	3-dimensional interconnected monofilaments	3-dimensional interconnected monofilaments							
Pile material		100% polyamide	100% regenerated Econyl® Nylon	100% regenerated Econyl® Nylon	100% polyamide-BCF solution dyed	100% polyamide-BCF, where 75% is regenerated Econyl® Nylon	100% vinyl Solution dyed	100% vinyl Solution dyed							
Tuft base		Non-woven polyester	100% recycled non-woven PET/Econyl®	Non-woven polyester	Non-woven polyester	Non-woven polyester									
Backing phthalate free vinyl		EVERFORT vinyl	EVERFORT vinyl	EVERFORT vinyl	EVERFORT vinyl	EVERFORT vinyl	Open structure or with EVERFORT vinyl backing	Open structure or with EVERFORT vinyl backing							
 Total weight	ISO 8543	Approx. 4100 gram/m ²	Approx. 3950 gram/m ²	Approx. 4050 gram/m ²	Approx. 4000 gram/m ²	Approx. 3800 gram/m ²	With backing: approx. 8100 gram/m ² Open structure: approx. 5500 gram/m ²	With backing: approx. 6500 gram/m ² Open structure: approx. 3500 gram/m ²							
 Total weight Coral tiles	ISO 8543	-	-	Approx. 4700 gram/m ²	Approx. 4700 gram/m ²	-	-	-							
Pile installation weight	ISO 8543	Approx. 1000 gram/m ²	Approx. 750 gram/m ²	Approx. 920 gram/m ²	Approx. 870 gram/m ²	Approx. 670 gram/m ²									
 Pile thickness	ISO 1766	Approx. 5.5 mm	Approx. 6.3 mm	Approx. 7 mm	Approx. 7 mm	Approx. 6 mm									
Pile density	ISO 8543	0.140 gram/cm ³	0.111 gram/cm ³	0.105 gram/cm ³	0.100 gram/cm ³	0.095 gram/cm ³									
Number of tufts	ISO 1763	Approx. 93000/m ²	Approx. 79300/m ²	Approx. 58000/m ²	Approx. 61500/m ²	Approx. 32000/m ²									
 Comfort class	EN 1307	LC3	LC3	LC3	LC3	LC2									

All Coral products meet the requirements of EN 14041, excluding loose-laid mats and rugs



 Fire behaviour	EN 13501-1	B _f -s1	B _f -s1	B _f -s1	B _f -s1	B _f -s1	With backing: B _f -s1	With backing: B _f -s1
 Slip resistance	EN 13893	DS	DS	DS	DS	DS	DS: μ0,78	DS: μ0,82
 Personal charging	ISO 6356	< 2 kV	< 2 kV	< 2 kV	< 2 kV	< 2 kV	< 2 kV	< 2 kV

* Also available with fire retardant backing.

Forbo Flooring Systems is part of the Forbo Group, a global leader in flooring and movement systems, and offers a full range of flooring products for both commercial and residential markets. High quality linoleum, vinyl, textile, flocked and entrance flooring products combine functionality, colour and design, offering you total flooring solutions for any environment.



Forbo Flooring B.V.
P.O. Box 13
1560 AA Krommenie
The Netherlands
Tel.: +31 75 647 74 77
Fax.: +31 75 647 77 01
contact@forbo.com
www.forbo-flooring.com

185603/092016

Find us on



creating better environments

forbo

FLOORING SYSTEMS